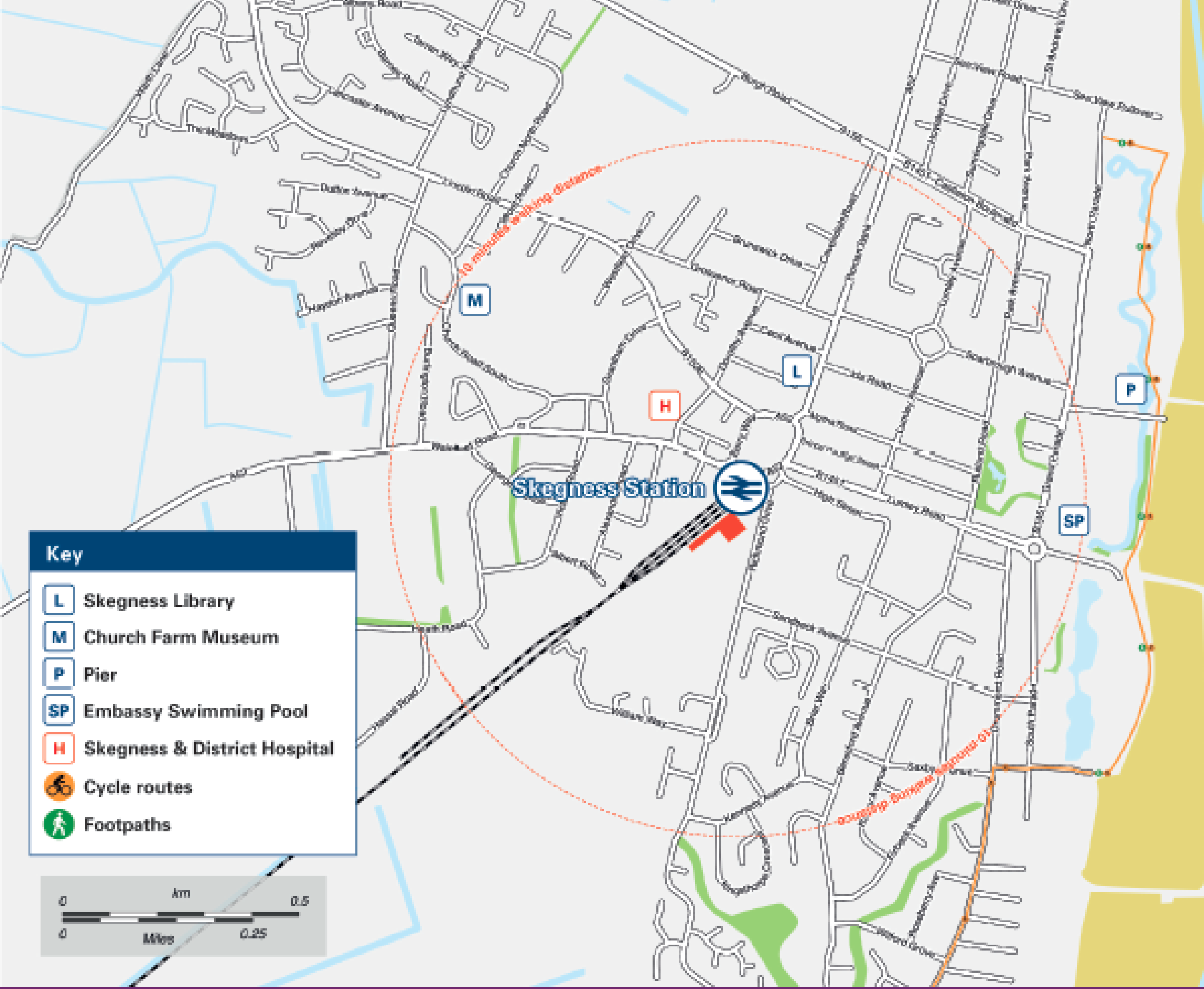
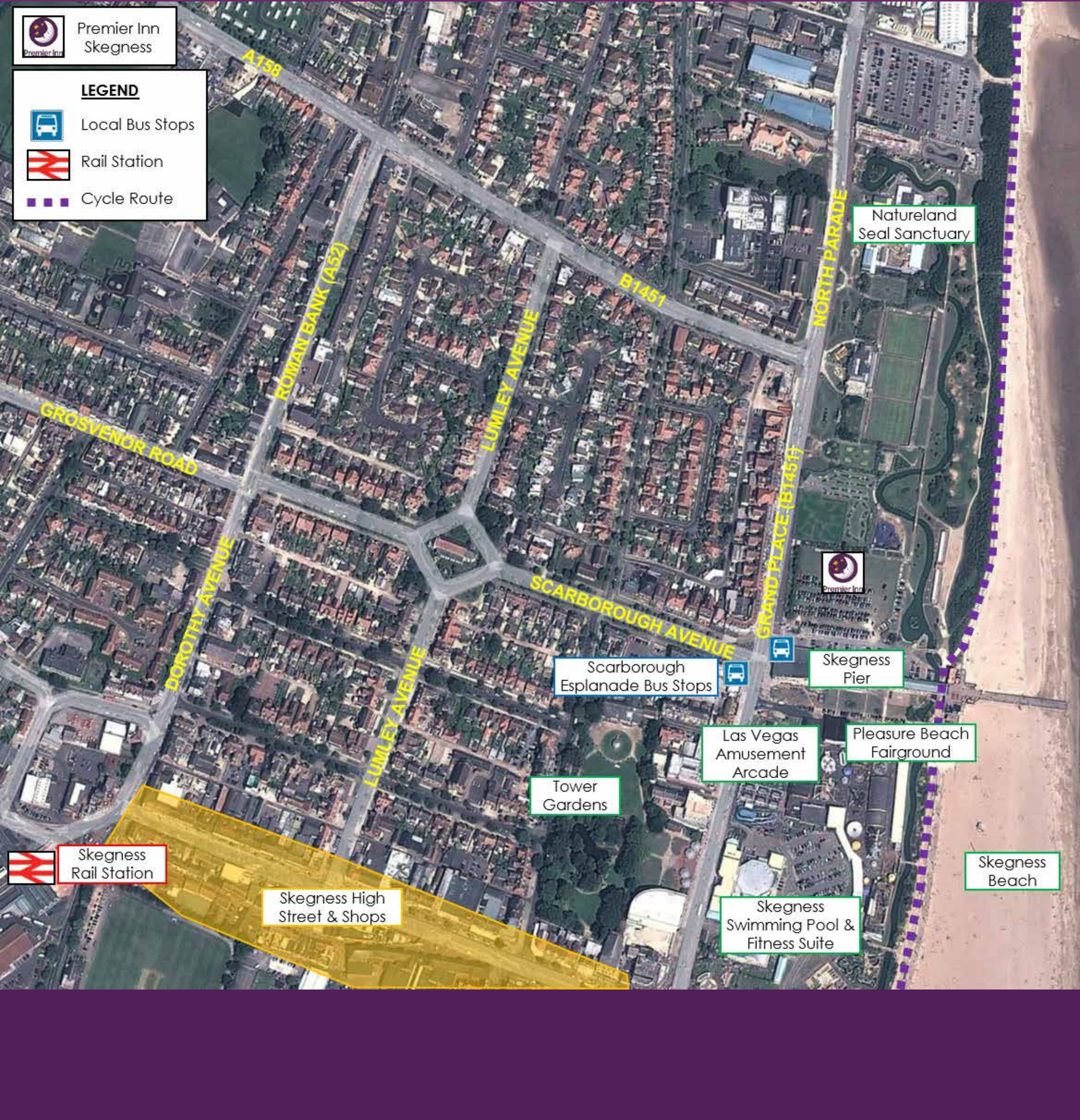


## While you check in, check out the local transport in Skegness...



We're trying to improve our impact on the environment and reduce our carbon footprint. We are happy to arrange a taxi for you if you need one, alternatively please find below information on local travel routes.



### On Foot

The Skegness Premier Inn is well located for travel on-foot. It is situated 500 metres to the north-east of Skegness town centre, adjacent to Skegness beach. The area benefits from high-quality pedestrian infrastructure including wide, well-lit footways and dropped kerbs. A signalised pedestrian crossing is located approximately 70m to the south of the hotel access at the entrance to Skegness Pier and another is provided across the Pleasure Beach access to the south of the pier, affording safe and convenient access to the various leisure and retail attractions in the locale.

### By Bicycle

Over short distances, cycling is often quicker and cheaper than using a car and more flexible than using public transport. The local area is well-suited to cycling with long, straight routes which provide a good level of visibility at junctions. There is also a dedicated pedestrian/cycle route along Promenade to the east of the site which continues south, forming a route adjacent to the seafront. Furthermore, for your convenience, there are cycle racks at the hotel and well as within Skegness town centre and at the railway station.

### By Bus

The closest bus stops to the hotel (Scarborough Parade stops) are located at North Parade / Grand Parade in the vicinity of Skegness Pier and Funland Amusement Arcade, approximately 50-75 metres and less than a minutes' walk to the south. Regular bus services call at these stops and operate routes to local town and city centres. Route maps and journey times for these services are available online at

[www.travelinemidlands.co.uk](http://www.travelinemidlands.co.uk) and [www.lincsbuses.info](http://www.lincsbuses.info).

### By Train

Skegness rail station is located approximately 1km (a 12 minutes' walk) to the south-west of the hotel. This station benefits from step-free access to all platforms, is operated by East Midlands Trains and provides local and national services to destinations including Nottingham, Boston, Havenhouse, Swineshead, Ancaster and Grantham. For further information on rail services, including fare details and live arrival/departure boards please visit [www.nationalrail.co.uk](http://www.nationalrail.co.uk).

### By Taxi

A taxi rank is available at Skegness railway station or the following operators serve the local area and can be prebooked in advance: 4000 – 01754 764000, A2B – 01754 761761 and Omega – 01754 764642.

### By Car

Free on-site parking is available for the shared use of the Premier Inn hotel, Cookhouse and Pub restaurant and KFC drive-through. An alternative to single occupancy car travel is car sharing (where two or more people travel together) which can bring significant cost savings. Whether you own a car or not, if you are interested in finding an alternative to congestion problems, rising fuel costs and paying for parking visit

[www.liftshare.com](http://www.liftshare.com), the largest car share network in the UK with over 600,000 registered members.